



Logo Placements 2511 T-Shirt

Recommended logo placements

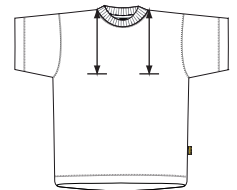
Heat seal & Embroidery

- 1 Left breast, maximum size 120x120 mm *
- 2 Left sleeve, maximum size 100x100 mm
- 3 Right breast, maximum size 120x120 mm *
- 4 Right sleeve, maximum size 100x100 mm
- 6 Back, top of logo 12 cm below seam, maximum size 75x280 mm
- 7 Center of breast, top of logo 1 cm below neck seam
- 50 Center of breast, in same height as placements 1 and 3, maximum size 280x280 mm
- 63 Back, bottom of logo 2 cm above bottom seam

Placements 1 and 3
Middle of logo

Size	X(cm)
XS	20
S	21
M	22
L-XL	23
2XL-3XL	24

Middle of logo
Left and right breast



Add

B after the placement and it will be below the (1B)

Y and it will be turned from bottom to top

Z after the placement and it will be turned from top to bottom

